

Job Name/Location:

Tag #:

Date: \_\_\_\_\_

PO No.: \_\_\_\_\_

Architect: \_\_\_\_\_ GC: \_\_\_\_\_

Engr: \_\_\_\_\_ Mech: \_\_\_\_\_

Rep: \_\_\_\_\_

(Company) \_\_\_\_\_ (Project Manager) \_\_\_\_\_

For:  File  Resubmit  
 Approval  Other \_\_\_\_\_



PQRCVCLQW

**LMHN360HV**  
 Multi F High Static Duct  
 36,000 Btu/h Indoor Unit



**Performance:**

Nominal Capacity (Btu/h)	36,000
Cooling Nominal Test Conditions:	Heating Nominal Test Conditions:
Indoor: 80°F DB/67°F WB	Indoor: 70°F DB/60°F WB
Outdoor: 95°F DB/75°F WB	Outdoor: 47°F DB/43°F WB

**Electrical:**

Power Supply (V <sup>1</sup> /Hz/Ø)	208-230/60/1
Rated Amps (A)	1.4

**Piping:**

Liquid Line (in, OD)	3/8
Vapor Line (in, OD)	5/8
Drain OD, ID (in)	1-1/4, 1
Temperature Sensor	Thermistor

**Features:**

- Inverter (variable speed fan)
- Internal condensate pump
- ESP control
- Hot start
- Auto restart
- Child lock
- Group control
- Sleep mode
- Timer (on/off)

**Included Accessories:**

- Simple Controller with Mode (White) - PQRCVCLQW

**Optional Accessories (sold separately)**

- LG Programmable Controller - PREMTB10U
- Simple Controller with Mode (Black) - PQRCVCLQW
- AC Smart II - PQCSW320A1E
- ACP without Digital I/O - PQCPA11A03
- ACP with Digital I/O - PQCPB11A0E
- LonWorks Gateway - PQNFB16A1
- BACnet Gateway - PQNFB17B0
- AC Ez - PQCSZ250S0
- Dry Contact Unit Dry Contact Unit (1 contact, 24 VAC external power) - PQDSB1
- Dry Contact Unit Dry Contact Unit (2 input, power from indoor unit) - PQDSBC
- Dry Contact for third party thermostat - PQDSBNGCM1
- Remote Temperature Sensor - PQRSTA0

**Operating Range:**

Cooling Max (°F WB)	76
Heating Min (°F DB)	59

**Unit Data:**

Refrigerant Type	R410A
Refrigerant Control	EEV
Sound Pressure <sup>2</sup> H/M/L (±3 dB(A))	44/42/40
Filter Type	Washable
Net Unit Weight (lbs)	91
Shipping Weight (lbs)	101

**Fan:**

Type	Sirocco
Quantity	2
Motor/Drive	Brushless Digitally Controlled/Direct
Airflow Rate H/M/L (CFM)	1130/953/706
External Static Pressure <sup>3</sup> (in wg)	0.39

**Notes:**

1. Acceptable operating voltage: 187V-253V.
2. Sound Pressure levels are tested in an anechoic chamber under ISO Standard 1996.
3. Adjust fan speed to correct for static pressure increases when using field supplied air filter.
4. See Engineering Manual for sensible and latent capacities.
5. All power/communication cable to be minimum 18 AWG, 4-conductor, stranded, shielded and must comply with applicable local and national code.
6. Power wiring cable size must comply with the applicable local and national codes.
7. This unit comes with a dry helium charge.
8. Corresponding refrigerant piping length is in accordance with standard length of each outdoor unit and the level difference is 0 ft. All capacities are net with a combination ratio between 95 – 105%.
9. Must follow installation instructions in the applicable LG installation manual.



Job Name/Location:

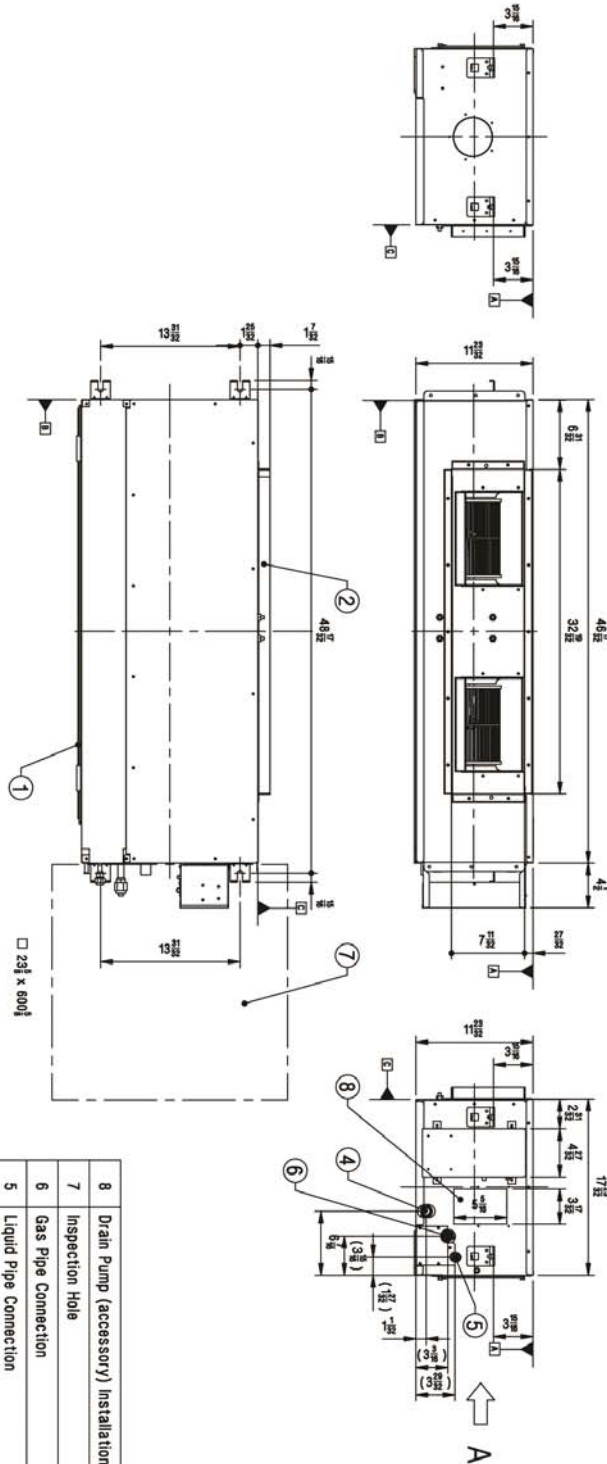
**LMHN360HV**  
 Multi F High Static Duct  
 36,000 Btu/h Indoor Unit



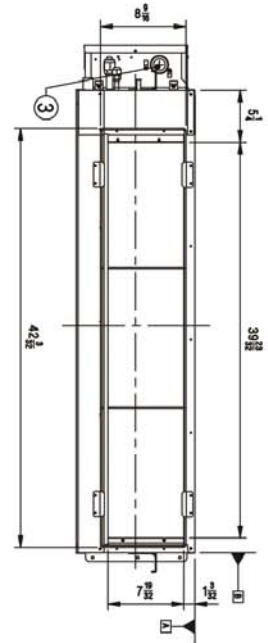
Tag #:

Date:

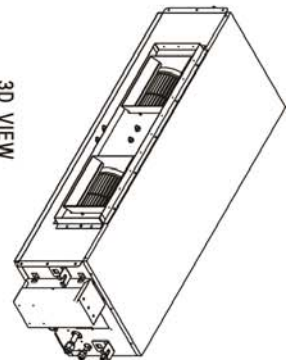
PO No.:



View A



3D VIEW



No.	Part Name	Description
8	Drain Pump (accessory) Installation Hole	Knock out Type
7	Inspection Hole	-
6	Gas Pipe Connection	-
5	Liquid Pipe Connection	-
4	Drain Pipe Connection	-
3	Power and Communication cable & Wired Remote Controller Wire Routing Hole	-
2	Air Outlet	-
1	Air Intake	-